

Asphodel-Norwood Public Library

# Porch Pickup at Westwood Branch

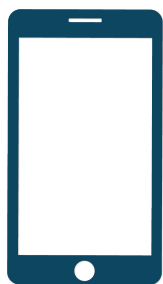
AVAILABLE  
BEGINNING  
JUNE 10th, 2020!

Place items on hold with your library card and pick up when ready!



## STEP 1:

Use our online catalogue to place holds on library items. If you are not comfortable with this process, please email [kvanluven@antownship.ca](mailto:kvanluven@antownship.ca) or call the Norwood branch (705-639-2228) and we will place item(s) on hold for you. \*\*Please note that staff are not regularly at the Westwood Branch. Westwood patrons will need to call the Norwood Branch to speak to a librarian who can assist with placing a curbside order.



## STEP 2:

We will contact you when your holds are ready to be picked up and arrange a contact-less pick-up time. Pick-ups at Westwood Branch will happen between 2:00 and 5:00 pm on Wednesdays.



## STEP 3:

Items will be placed in a bag labelled with your name outside the front of the Library at the arranged date and time.



## STEP 4:

Enjoy your items! Items can be returned to the Library Book Return when you're finished, or when the Library re-opens. There are NO LATE FEES at this time.

**WESTWOOD BRANCH PICKUPS ARE AVAILABLE:**

Wednesdays | 2:00 - 5:00 pm

**PLACE YOUR ORDER TODAY!**

[www.anpl.org](http://www.anpl.org) > online services > catalogue